

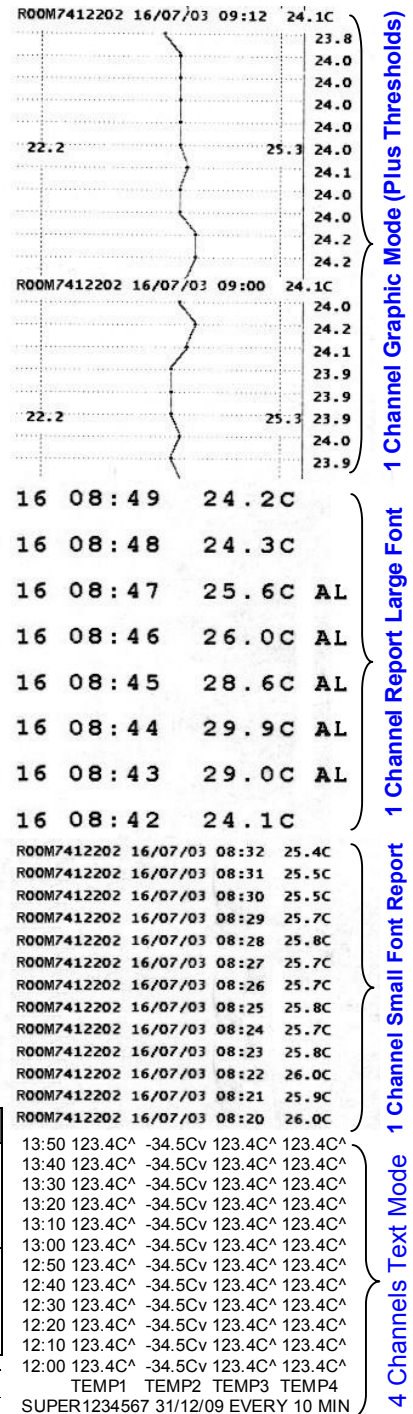
# 4 Channels Recorder, Temperature & Humidity Logger, Printer & Alarm

## INNOVATIVE DESIGN, USER - FRIENDLY, HIGH PERFORMANCES.

- Up to **4 input channels** of Temperature, Humidity & Events (Switches)
- Monitoring, Logging, Alarms, Exporting data and Printing in Real Time
- Record in intervals from 1 to 120 Minutes, in 1 Minute increments
- Over and under alarms plus delay setup (0-120min.) for each channel
- Operating and Setting by means of 6 function keys
- Printing chooses channel in auto scale as graph, including alarms
- Printing 1 or 4 Channels full report in 3 text modes, including alarms
- Printing help messages, Summary and sorted reports on request
- Display the measuring values, minimum or maximum on request
- Exporting real time data thru RS-232 PC port – No Software needed
- C° or F° degrees, date format: dd/mm/yy or mm/dd/yy setting
- Low battery, Chart end and Probe error indicators & alarms buzzer
- Remote Alarm output via relay contacts of 0.5A (10VA)
- Remote Probes 33' (10 meters) cable length, Extendible up to 100'
- Tamper proof, unit & channels names, Real time clock, Min. /Max.
- 8.2"x5.3"x2.7" (209x135x69 mm), 2.6 Lbs (1.8 Kg)
- Data & settings retained after Power failure

# NEW

## 4 Channel Logger



Model No.	Input voltage	Measuring Options	Sample capacity	Included Probes 33'
VLTH-12	12Vac/dc	Up to 4 channels in Any combination of Temperature and Events (Switches)	16,200 points of temperature and Events (X 4 probes)	1 "VLT PROBE" (for Temperature) 1 "VLS CABLE" (On/Off Indication)
VLTH-115	120 Vac			
VLTH-230	220~240Vac			
VLTH-12	12Vac/dc	Temp., Humidity & Event or 4 channels By 2 probes of Temp. & Humidity	16,200 points Temperature and Humidity (X 4 channels)	1 "VLTH PROBE" (for Temp & Humid) 1 "VLS CABLE" (On/Off Indication)
VLTH-115	120 Vac			
VLTH-230	220~240Vac			

Ambient Operating Temp. range: 0°/+150°F, -40°/+65°C, With lithium battery  
Ambient Operating relative Humidity: 0 to 95% RH, non-condensing

\*Additional Probes from the table below can be added to the base unit (up to 4 channels)

Probes model	Measure Range	Resolution	Accuracy	Repeatability	Response
VLT PROBE Temperature	-40° / +130°C	0,1°C	± 0,3°C	± 0,1°C	5 - 30
	-40° / +266°F	0,2°F	± 0,6°F	± 0,2°F	Sec.
VLTH PROBE Temperature And Humidity	-40° / +85°C	0,1°C	± 0,5°C	± 0,1°C	5 - 30
	-40° / +185°F	0,1°F	± 1,0°F	± 0,2°F	Sec.
	10.0 / 89.9% RH	0,1 %RH	± 2 %RH	± 0,1 %RH	6 - 10
	0.1-9.9 / 90-100%	0,1 %RH	± 4 %RH	± 0,5 %RH	Sec.
VLS CABLE Event / Switch	Recognized dry contact events (On/Off indication)				1 Sec.

## 4 Print Modes Available

Standard Accessories (optional)	
VLPAPER	2' Thermal chart roll 131'
VLWCASE	Water proof case + Lock
VLSK	Remote alarm silencer
CABLE33H	Probe extension 33' (10m)
CABLE66H	Probe extension 66' (20m)
VPR	Power reducer, 24 to 12V
ADTA	Auto phone dialer
VLCEL	Cellular adaptor to internet

Supco International LTD.

SUPCO International Ltd.

PO BOX 8047, HAUMANUT ST. 3 NETANYA, 42180, ISRAEL. Tel. 972-9-865 4101 \* FAX: 972-9-865 9111 [info@supco.co.il](mailto:info@supco.co.il)

# The Vision



## 4 Channel Logger - Recorder Temperature - Humidity - Event



1. Monitoring.....Large LED Display
2. Printing.....2" thermal printer
3. Data Logging.....1 year, 16,200 data points
4. Alarm.....Internal & external
5. Data Transfer.....To Computer No software needed
6. Multi Channel.....up to 4 channels

### Cold rooms

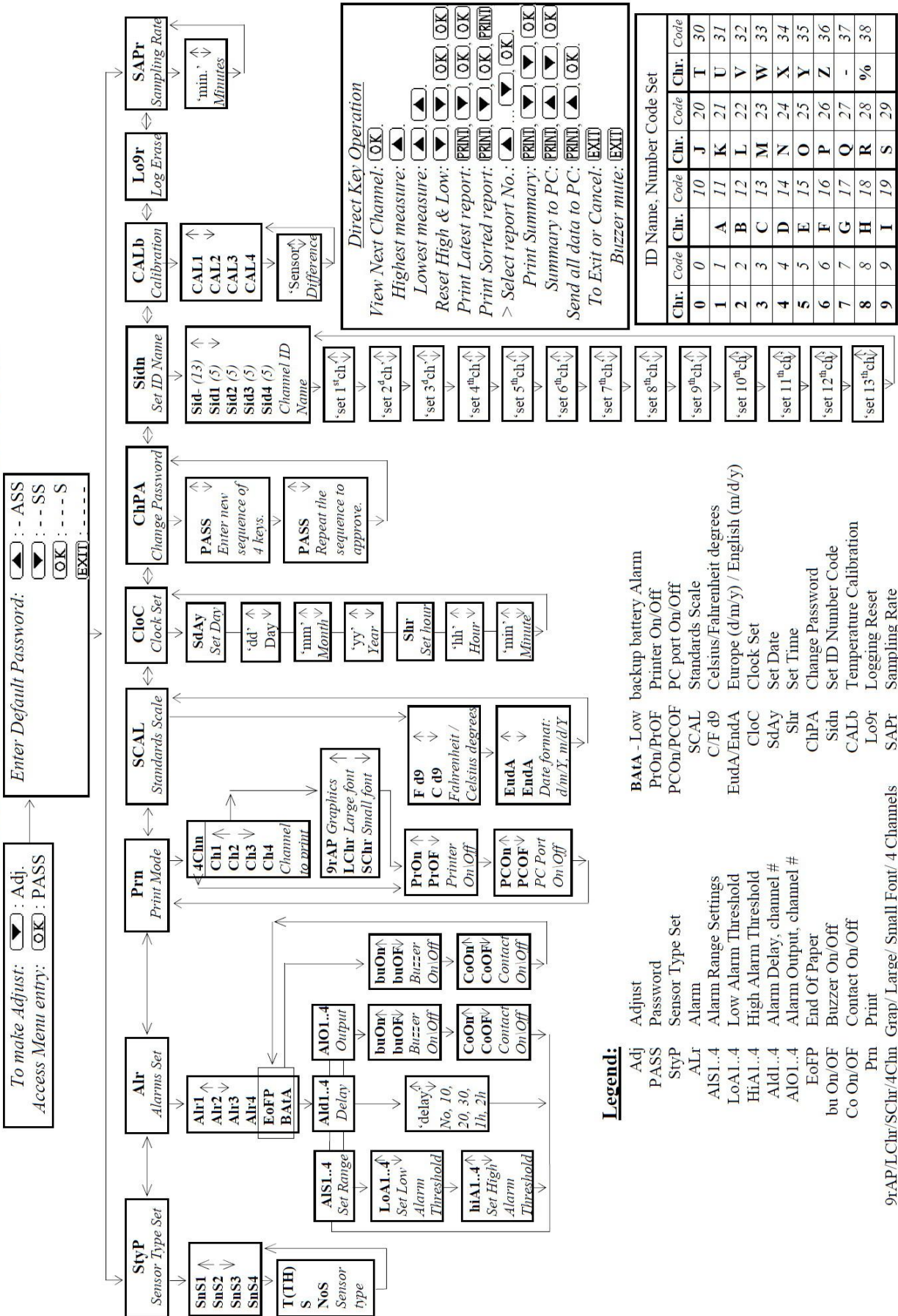
- Transportation
- Food Storage
- Pharmaceutical
- Agriculture



**SUPCO International Ltd.**

PO BOX 8047, HAUMANUT ST. 3 NETANYA, 42180, ISRAEL. Tel. 972-9-865 4101 \* FAX: 972-9-865 9111 [info@supco.co.il](mailto:info@supco.co.il)

# VLT4 / VLTH - 4 Channel Vision Recorder - Menu structure Ver. 0.25



Enter Default Password:  
 [Left Arrow] : - ASS  
 [Right Arrow] : - SS  
 [OK] : - - S  
 [EXIT] : - - - -

To make Adjust: [Left Arrow] : Adj.  
 Access Menu entry: [OK] : PASS

**Direct Key Operation**  
 View Next Channel: [OK]  
 Highest measure: [Left Arrow]  
 Lowest measure: [Right Arrow]  
 Reset High & Low: [Left Arrow], [Right Arrow], [OK], [OK]  
 Print Latest report: [PRINT], [OK], [OK]  
 Print Sorted report: [PRINT], [OK], [PRINT]  
 > Select report No.: [Left Arrow], [Right Arrow], [OK]  
 Print Summary: [PRINT], [OK], [OK]  
 Summary to PC: [PRINT], [Left Arrow], [OK]  
 Send all data to PC: [PRINT], [Left Arrow], [OK]  
 To Exit or Cancel: [EXIT]  
 Buzzer mute: [EXIT]

ID Name, Number Code Set					
Chr.	Code	Chr.	Code	Chr.	Code
0	0	10	J	20	T
1	1	11	K	21	U
2	2	12	L	22	V
3	3	13	M	23	W
4	4	14	N	24	X
5	5	15	O	25	Y
6	6	16	P	26	Z
7	7	17	Q	27	-
8	8	18	R	28	%
9	9	19	S	29	

**Legend:**

- Adj Adjust
- PASS Password
- StYP Sensor Type Set
- ALr Alarm
- ALSL..4 Alarm Range Settings
- LoAl..4 Low Alarm Threshold
- HiAl..4 High Alarm Threshold
- AlDl..4 Alarm Delay, channel #
- AlOl..4 Alarm Output, channel #
- EOFP End Of Paper
- bu On/Off Buzzer On/Off
- Co On/Off Contact On/Off
- Pm Print
- 9rAP/LChr/SChr/4Chn Grap/ Large/ Small Font/ 4 Channels
- BAtM - Low backup battery Alarm
- PrOn/PrOF Printer On/Off
- PCOn/PCOF PC port On/Off
- SCAL Standards Scale
- C/F d9 Celsius/Fahrenheit degrees
- EudA/EndA Europe (d/m/y) / English (m/d/y)
- CloC Clock Set
- SdAY Set Date
- Shr Set Time
- ChPA Change Password
- Sidn Set ID Number Code
- CALb Temperature Calibration
- Lo9r Logging Reset
- SAPr Sampling Rate